

# HEXAGON

Colinas del Limonar



# ENVIRONMENTAL RESPONSIBILITY

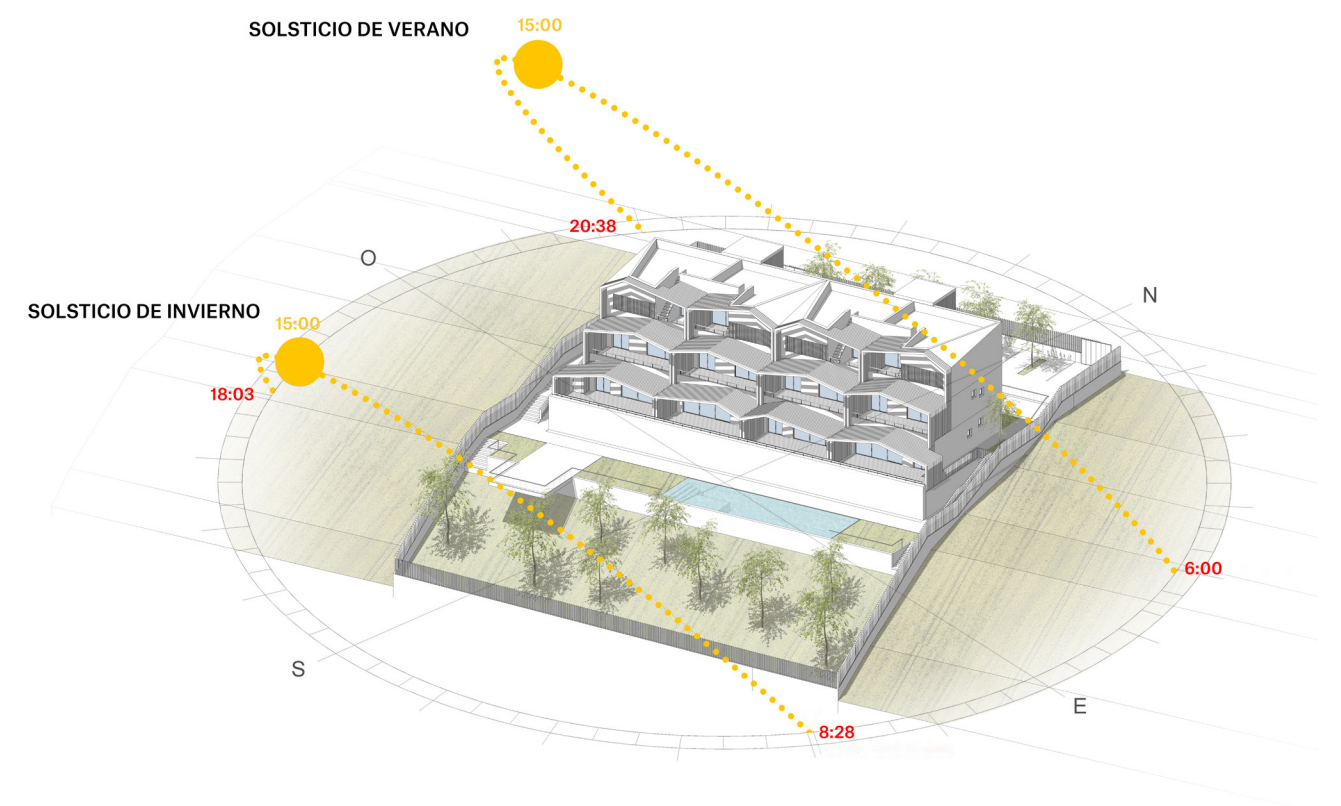
ENERGY EFFICIENCY

SUSTAINABILITY

SAVING

Being aware of the importance of contributing to the improvement of our environment, at Nuovit Homes we strongly believe in sustainable construction, having an impact on society and very directly on owners and users, both present and future.

Starting from this vision and with the clear objective of improving the energy efficiency of the building, the design is analyzed from the orientation of the house and from the sunshine to which it will be exposed throughout the year.



## SOLAR EXPOSURE



Based on this analysis, construction systems of the enclosure are implemented to reduce the need for energy consumption in air conditioning / heating:



**ROOF**

Inverted roof with extruded polystyrene insulation, waterproofing with asphalt sheet and gravel finish.



**AEROTHERMIA**

System for air-conditioning and hot water production.



**ORIENTATION**

Apartments, and their interior stays, focused to optimize the necessities of air conditioning.



**EXTERIOR CARPENTRY**

White lacquered aluminium carpentry with heat channel breakage.

Double glazing in thermo-acoustic glass 6/12/6 mm.

Darkening system in bedrooms by means of aluminium blinds in the same colour as the aluminium profiles, with insulated blind box.



**FAÇADE**

Façade made of ceramic pieces of perforated brick finished in white smooth rendering, self-supporting interior panelling by means of laminated plaster-board with insulation.

# BUILDING ENVELOPE

We also complement the actions in the enclosure with other measures to achieve improved energy efficiency:



**THERMAL GROUND INSULATION**

The apartments have thermal insulation on the ground floor.



**THERMAL PARTY WALLS INSULATION**

Thermal insulation in party walls with other apartments and common areas.



**ENERGY-EFFICIENT ELEVATORS**

Energy-efficient elevators, with frequency variators to save on starts and stops.



**AEROTHERMIA**

Individual production system of air conditioning / heating and hot water by aerothermia. These systems save electricity bills and also achieve a significant reduction in CO2 emissions with respect to conventional energy.



**BI-THERMAL PLUGS**

Bi-thermal sockets for washing machines and dishwashers, avoiding water heating due to electrical resistance.



**LED LIGHTING IN COMMON AREAS**

Illumination of common areas with LED luminaires and presence detectors.

These measures allow the house to get an energy rating:





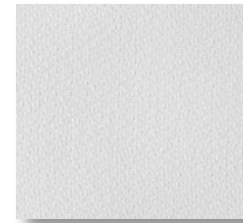
# INSIDE THE APARTMENTS

NATURAL

QUALITY

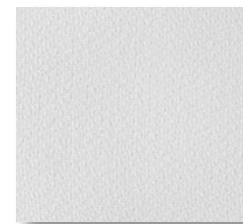
DESIGN

## Roof, Tiling and Flooring



### ROOF

Laminated plasterboards with PLADUR system or similar. Finished in white plastic paint.



### WALLS

Plastic paint in white.



### FLOOR

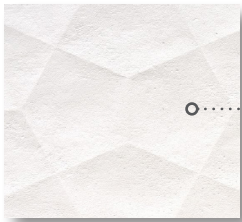
Porcelain paving model PETRALAVA in graphite color by SALONI in bedrooms and living rooms. Same model in terraces, but with non-slip treatment. Dimensions 60x60cm.

## LIVINGROOM & BEDROOM





Flooring and Tiling



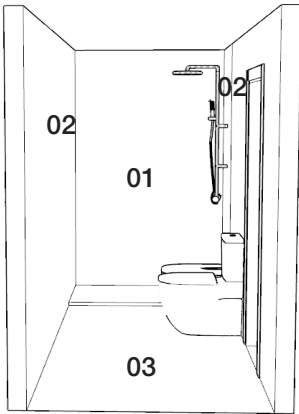
**01 TILING**  
ARKAN model tiles in white color by SALONI on a wall of shower area. Dimensions 25x75cm.



**02 TILING**  
SUNSET model tiles in white color by SALONI on the rest of the walls. Dimensions 25x75cm.



**03 FLOOR**  
Porcelain flooring PETRALAVA model in graphite color by SALONI. Dimensions 60x60cm.



MAIN BATHROOM



Flooring and Tiling



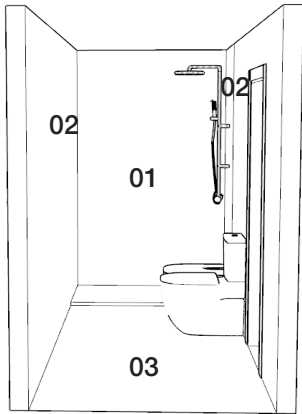
**01 TILING**  
AXIOM model tiles in ivory color by SALONI on a wall of shower area. Dimensions 25x75cm.



**02 TILING**  
KEYSTONE model tiles in ivory color by SALONI on the rest of the walls. Dimensions 25x75cm.



**03 FLOOR**  
Porcelain flooring PETRALAVA model in graphite color by SALONI. Dimensions 60x60cm.



SECONDARY BATHROOM







TOILET THE GAP

Toilet model THE GAP by ROCA, finished in white, with lid and double flush cistern 4.3/3 L.



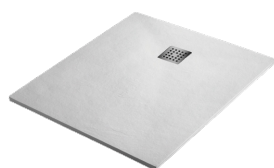
BIDET THE GAP

Bidet model THE GAP by ROCA with cover, finished in white.



WASHBASIN PRISMA

PRISMA model washbasin in porcelain wall-mounted or top-mounted by ROCA, white color and minimalist siphon. Mirror 60x80cm..



SHOWER TRAY PACÍFICO

PACIFIC model by SINTEXTONE, extra-flat in white colour.

# LAVATORIES



WASHBASIN FAUCET

L20 modelo L20 by ROCA. Single-lever basin mixer with automatic drain and flexible feed links. Chrome finish.



GRIFERÍA BIDÉ

L20 modelo by ROCA. Single-lever bidet mixer with automatic drain and flexible feed links. Chrome finish.



SHOWER FAUCET

L20 model by ROCA. Single-lever outdoor shower mixer, chrome finish with sliding bar.

# FAUCET

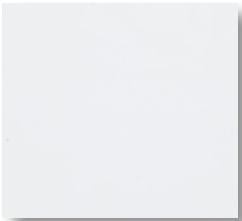




Roof, Tiling and Flooring



ROOF  
Laminated plasterboards with PLADUR system or similar. Finished in white plastic paint.



TILING  
Covering model NEBULA in white matt color by SALONI. Dimensions 30x60cm.



FLOOR  
Porcelain flooring PETRALAVA model in graphite color by SALONI. Dimensions 60x60cm.

KITCHEN



ENTRANCE DOOR  
Door with modern design, lacquered in white color with horizontal pantographed lines, armored, of a leaf, with 3 points of closing. It has an embedded security lock with an anti-drill shield on the outside. Includes knob, handle and peephole.



INDOOR DOORS  
White lacquered folding doors with horizontal pantographed lines and handle. A latch will be placed on the bathroom doors.



WARDROBE  
In the bedrooms there will be a wardrobe front with smooth and folding doors, lacquered in white and covered with melamine finished in white, with shelf trunk and hanging bar.



CARPENTRY



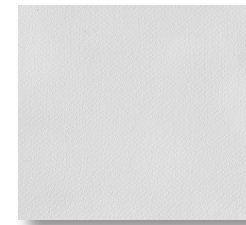


# COMMUNAL AREAS

SECURITY

FAMILIAR

RELAX



ROOF

Laminated plasterboards with  
PLADUR system or similar.  
Finished in white plastic paint.

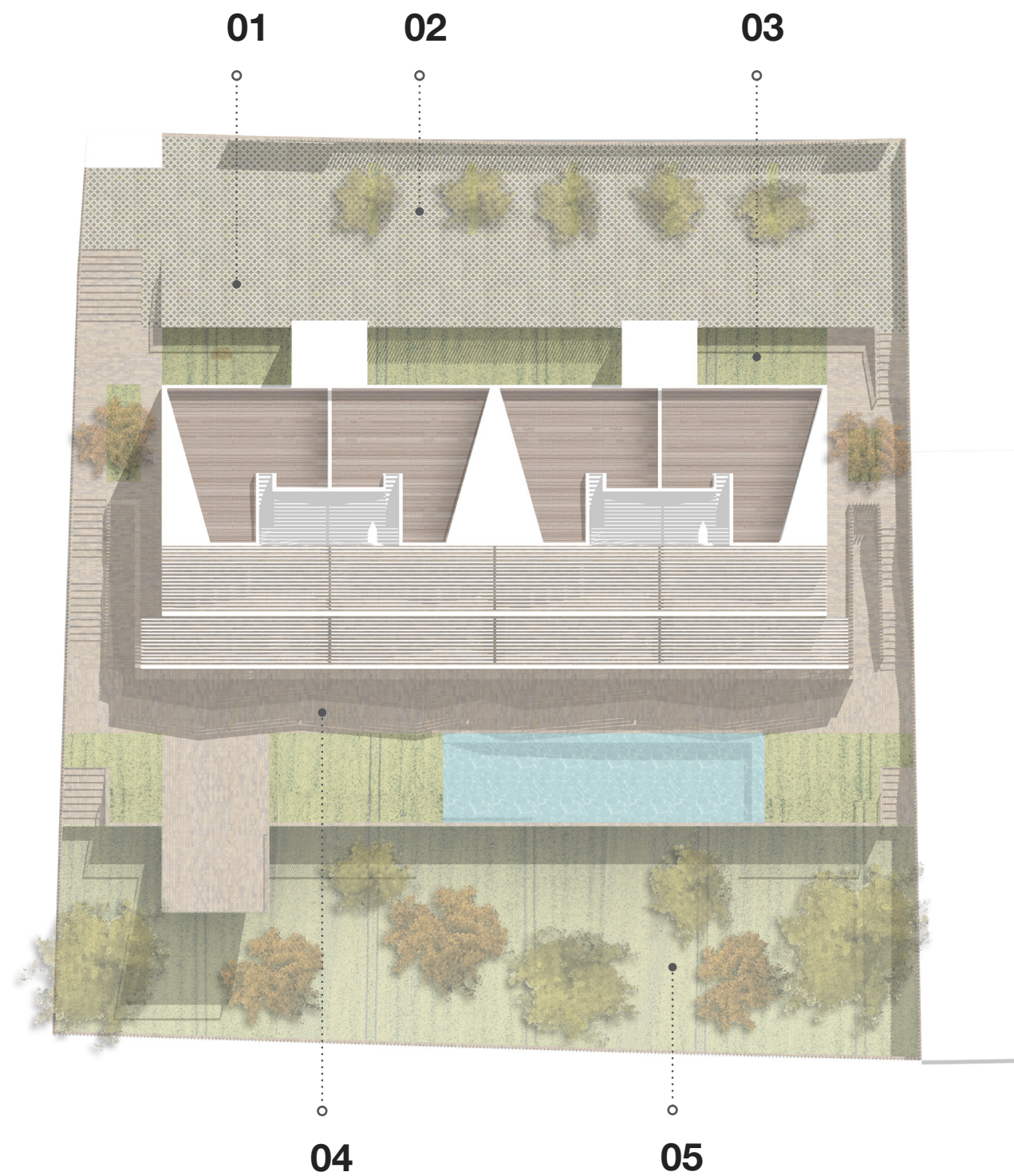


FLOOR

Porcelain flooring PETRALAVA  
model in grey color by SALONI.  
Dimensions 60x60cm.





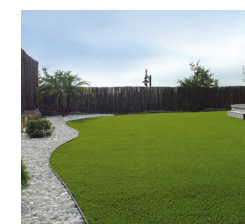


# OUTSIDE AREA



**01 PRINTED CONCRETE**  
Concrete printed in grey with a pattern to be chosen by the architect.

**02 OUTSIDE CAR PARK**



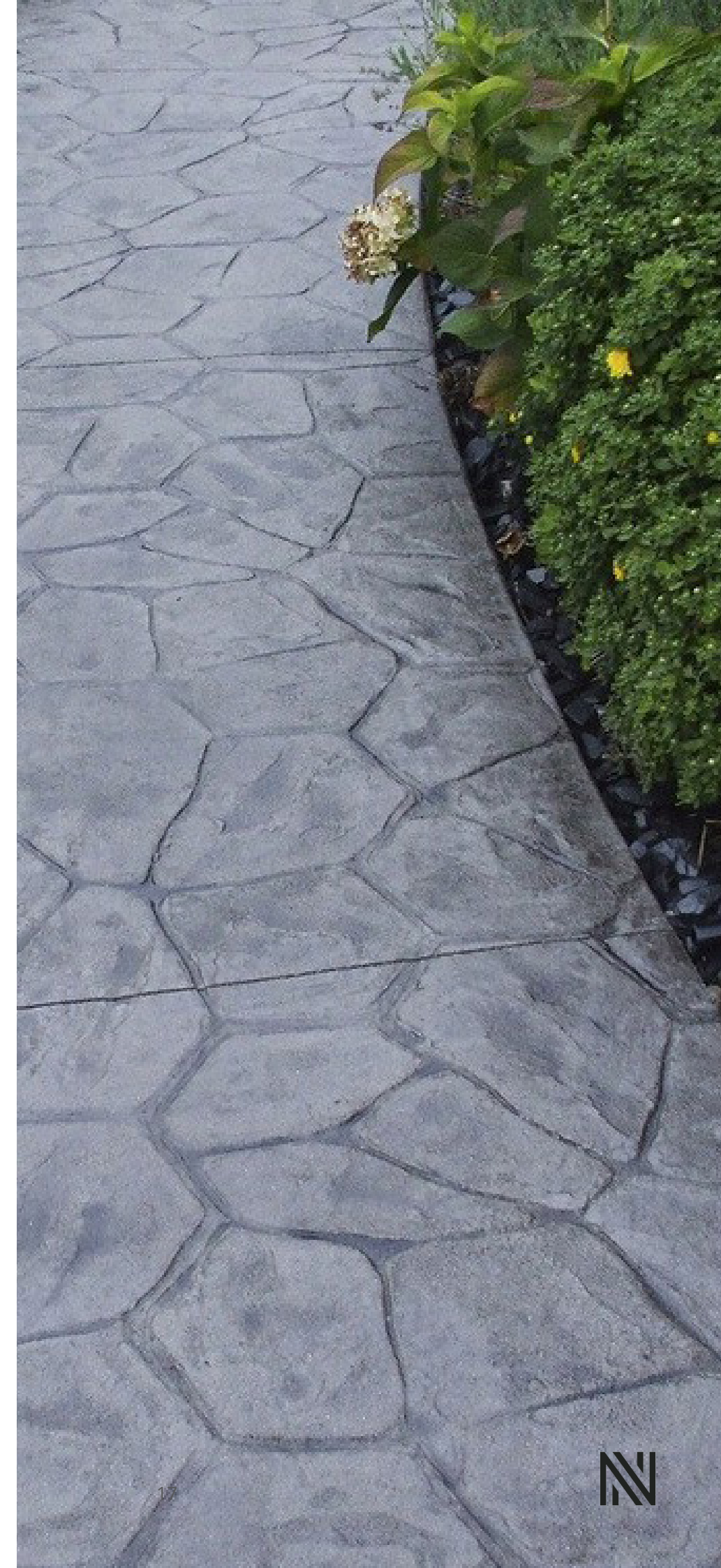
**03 ARTIFICIAL GRASS**



**04 PETRALAVA**  
Porcelain flooring PETRALAVA model in grey color by SALONI. Dimensions 60x60cm.



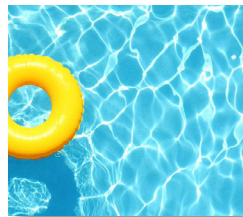
**05 VEGETAL SOIL**  
There are areas on the outside that are going to leave the ground with termination in vegetal soil.







BICYCLE PARKING



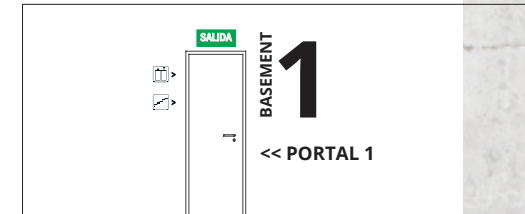
COMMUNAL POOL

With chlorine dosing system and automatic PH.



# AMENITIES

## STAIRWELL



> Elevator symbol painted in black.



> Stairs symbol painted in black.

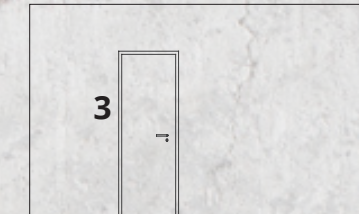


> Plant lettering in black.



> Portals indication with black painted letters.

## STOREROOM



**3** The storage room number will be marked on the wall with black paint on one side of the door.

## PARKING COLUMNS



All columns will be painted in blue color.

## 01 EXPOSED CONCRETE

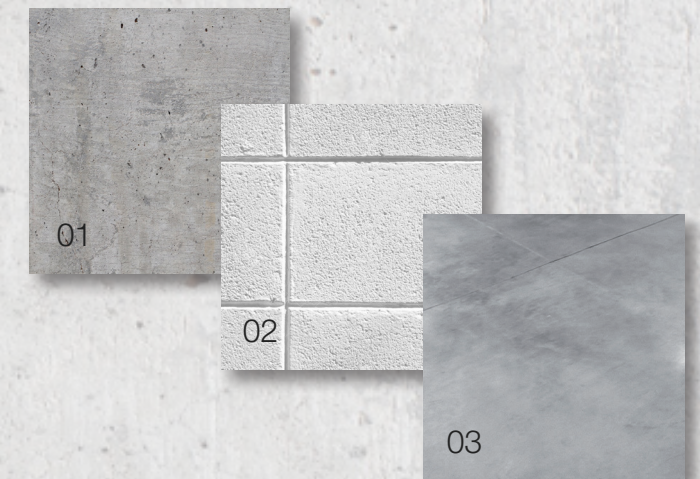
On the perimeter wall of the parking space.

## 02 WHITE PAINTED CONCRETE BLOCK

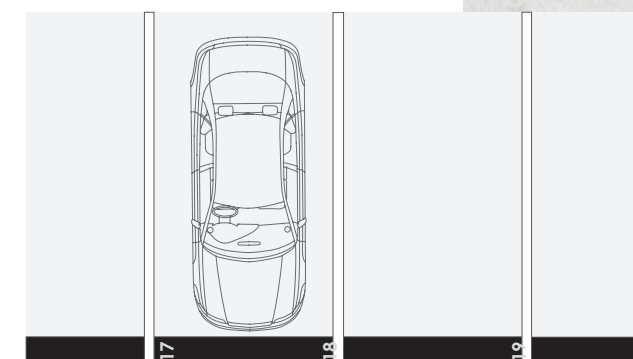
In the staircase walls and storage rooms.

## 03 SMOOTHED CONCRETE

On the parking area floor.



## PARKING SPACES



Parking separation lines will be painted in white. The separation line with the circulation lane will be painted in black and the square number will be painted in white.

# PARKING



# INSTALLATIONS

WELLBEING

COMFORT

There will be efficient resources available to satisfy the demand for thermal comfort and hygiene of air conditioning and hot water production facilities. The purpose is to obtain a more rational use of energy, from the point of view of energy saving, both economically for the user and the protection of our environment.

## DOMESTIC HOT WATER

For the sanitary hot water, an aerothermic equipment has been planned.

## AIR CONDITIONING / HEATING

The interior equipment chosen to give cold and heat has been solved with a water-air equipment, fan-coil, roof type. This equipment will be connected to the interior hydraulic equipment installed for the aerothermal system.

For the air-conditioning distribution system in each dwelling, a system of ducts has been installed through the ceilings of bathrooms and corridors that will drive the impulse to all the rooms, in which diffusion elements will be installed by means of grids.

For the system control, a digital thermostat has been planned that will give service to the fan-coil and the aerothermal equipment.

THERMAL INSTALLATIONS





## PLUMBING

The interior installation of cold and hot water dwelling will be with polyethylene cross-linked pipe with insulation in the hot water pipe and cut-off tap in each wet room.

Dishwasher and washing machine sockets will be bi-thermal.

## SANITATIONS

The system of downpipes and drains of the houses will be made with PVC. All appliances will have individual siphons or recordable siphons.

## VENTILATION SYSTEM

The houses rooms will be ventilated by mechanical systems, for which a system of humid air extraction is designed, a network of conducts will extract stale air from bathrooms and kitchens with air supply through dry areas by using aerators or grids located in the frame of the windows.

Independent ducts for all extraction hoods from kitchens to the roof, preventing the transmission of smells from one house to another.

# PLUMBING, SANITATION AND VENTILATION

## ELECTRICITY AND TELECOMMUNICATIONS

The electrical installation will be designed with a high level of electrification, expected to satisfy current requirements and future expansion of the systems or technology.

The switches and mechanisms will be model NIESSEN TACTO in grey colour, a revolutionary collection in usability and aesthetics, the perfect combination of design and functionality.

Video intercom.

Telecommunications installation with RJ45 sockets, TV in living room and bedrooms according to the telecommunications project.



# ELECTRICITY AND TELECOMMUNICATIONS





The developer may replace and/or modify any of the materials/parts/products/frames and/or construction systems mentioned above with others of similar characteristics and quality. In any case, such substitution and/or modification must be authorised by the site management. All the advertised images are references with decorative elements, furniture and vegetation that are not part of the offer.

221119